



# The State of the Network

Osman Sankoh  
*Executive Director*

ISC 2015, Addis Ababa, Ethiopia

**11 November 2015**

# The intention...

- By the end of these few minutes, you'd have an idea of...
  - Our membership criteria and strength
  - Our scientific framework & activities
  - Our capacity strengthening activities
  - Our efforts to engage policy makers
  - Our strides in data sharing
  - Our financial strength
  - Our aspirations
  - Our key challenges and the opportunities

**PLEASE ATTEND THE SESSIONS FOR MORE DETAILS**



# Fulfilling the Goals: Role of the Secretariat

## Strengthen Capacity

- Expand adoption and use of capacity strengthening initiatives

## Conduct Research

- Ensure Working Groups identify new research initiatives
  - Focus Working Groups on high impact studies
  - Improve success rate of proposals

## Publish & Share Data

- Increase number of centres meeting criteria
- Increase number of centres on INDEPTHStats
  - Grow number of INDEPTH publications

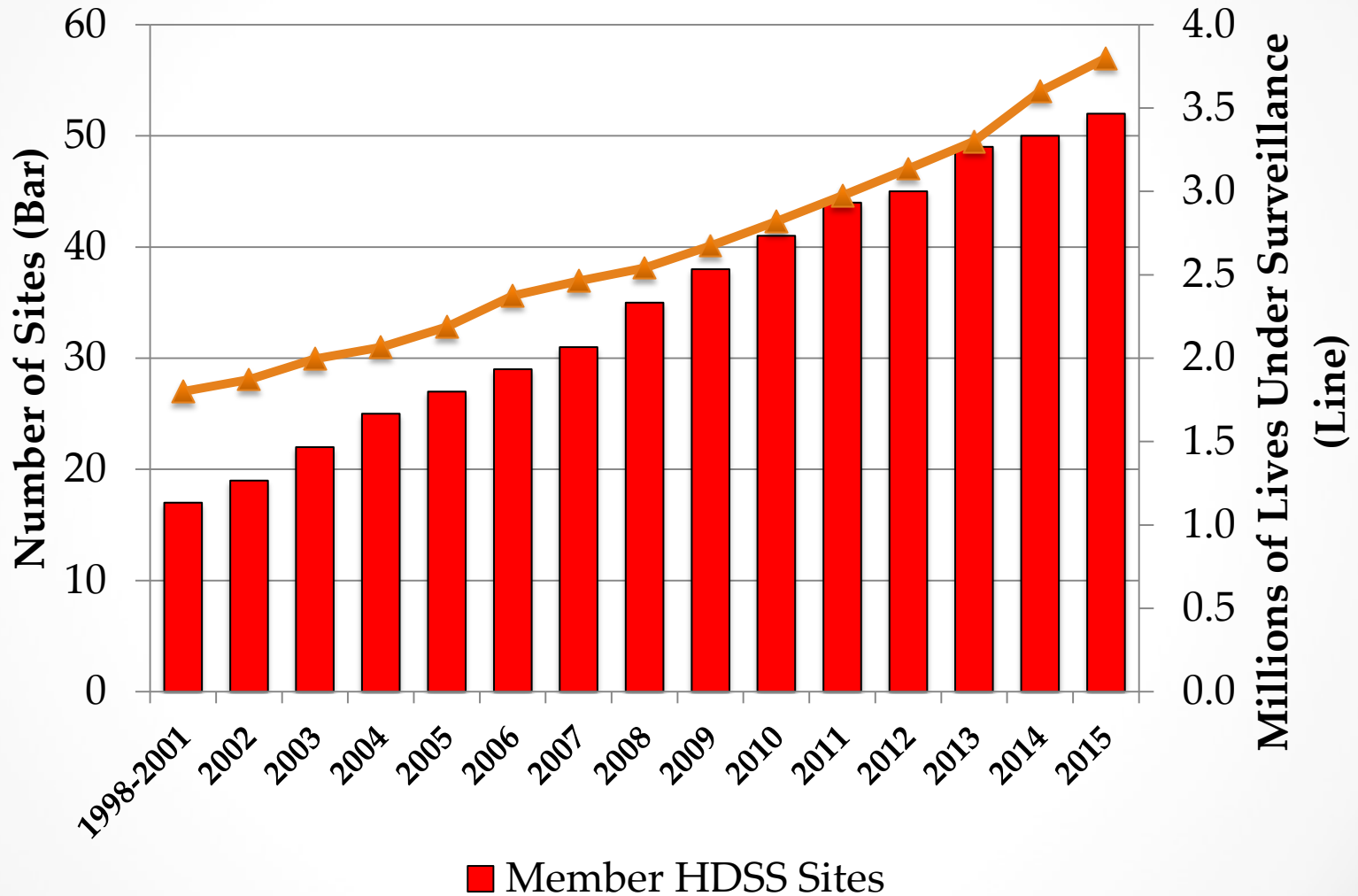
**POLICY**

**Guide  
Cost-Effective  
Use of Tools,  
Interventions, Systems**

- Implement programme for increasing impact of INDEPTH on policy
- Build on members' existing strength in policy & practice

**ENGAGEMENT**

# Expanding Footprint of HDSS

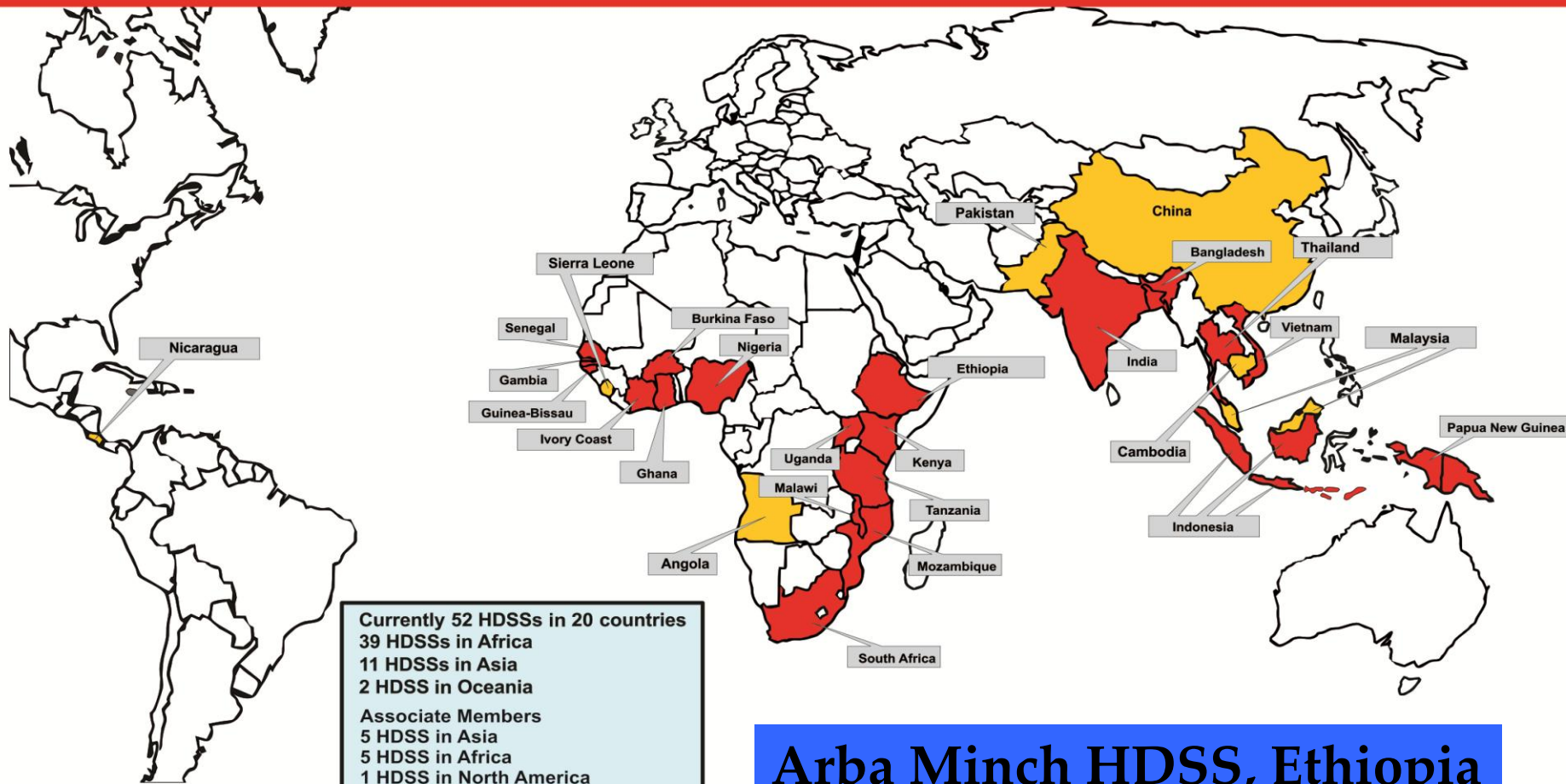




# INDEPTH Network

Better Health Information for Better Health Policy

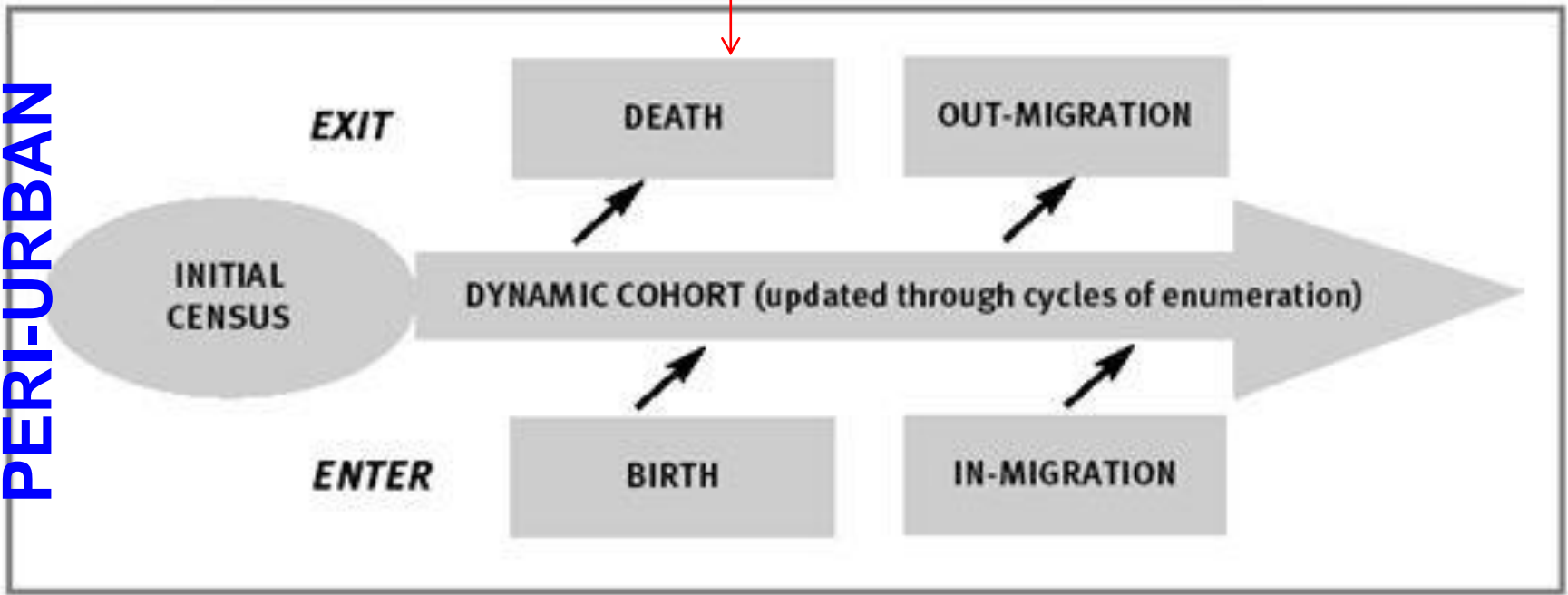
## Membership in 2015



# Prospective monitoring – the core

RURAL - URBAN  
PERI-URBAN

Verbal autopsy  
for cause of  
death



Measure characteristics of environment or household members (e.g. SES, vaccines, HIV, nutrition)

Capturing episodes of disease and hospital admission; clinical, molecular-genomic level

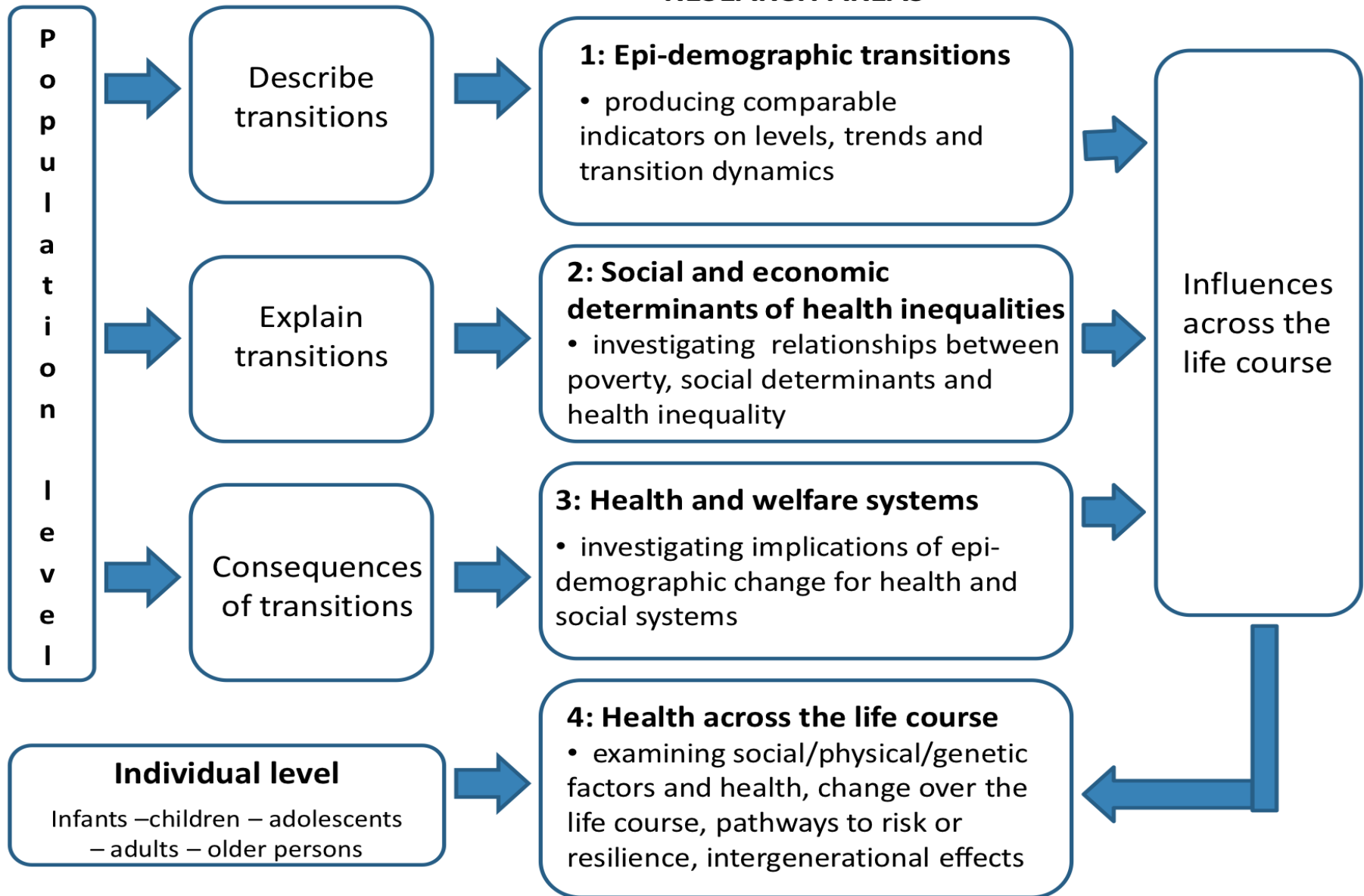


# Our Research Strategy

- INDEPTH conducts studies that use the key demographic outcomes measured by HDSSs:
  - **fertility, all-cause and cause-specific mortality, mobility and morbidity.**
- **Priority is given to:**
  - Outcomes that are **measured poorly** by other data collection systems.
  - Answering questions that require research in **more than one HDSS.**

# Research Framework

## RESEARCH AREAS





# Working Group Strategy

1. Adult health & Aging
2. Migration & urbanization
3. Vaccination & child survival
4. Antibiotics Resistance
5. Cause of death determination
6. Environment & health
7. Sexual & Reproductive Health
8. Health Systems
9. Maternal & Newborn Health
10. Social Science
11. Education



# Examples of big Projects

- Vaccination & Child Survival
- Effectiveness and safety studies of antimalarials in Africa
- Genomics

## New in 2015

- Maternal & Newborn Health
- iHOPE (household out of pocket expenditures)
- Antibiotics Resistance

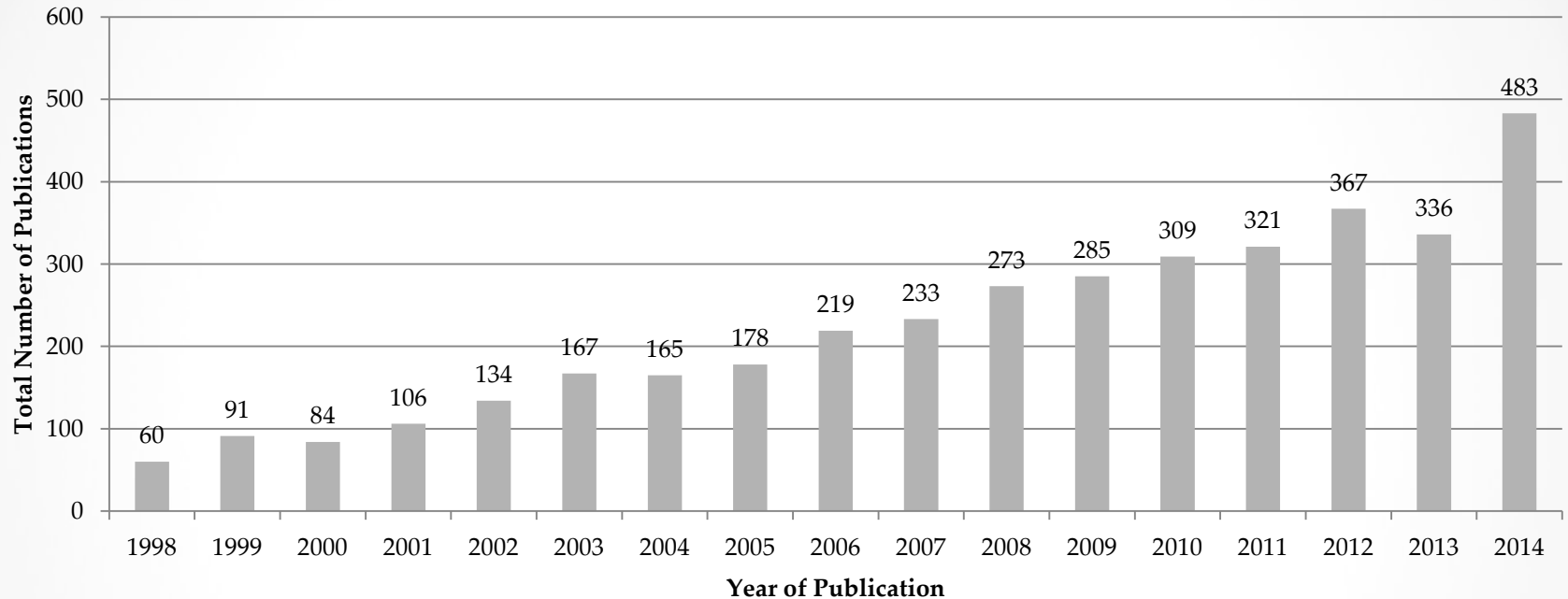
**Some of these projects have resulted from investing our core funds**

# We support Masters/PhD Training...

- **Masters Training**
  - School of Public Health, University of the Witwatersrand, Johannesburg, South Africa (**44 graduates**)
  - JP Grant SPH at BRAC University, Bangladesh (**2 graduates**)
  - Health Economics and Health Care Management at Chulanlongkorn University in Bangkok, Thailand (**2 graduates**)
- **PhD training support (direct or nested in Working Groups)**
- Data management support (Training workshops for data managers)
- **Strategic Group** on capacity strengthening and training issues



# INDEPTH Member Centre Publications by Year (1998- 2014) n=3811



- The Lancet, Nature, Science, IJE, ...
- KEY: multi-centre publications (Working Groups & Projects)
- Acknowledging INDEPTH / identifying with INDEPTH

# INDEPTH is a leader in sharing data!!

THE LANCET

2011

Sharing research data to improve public health: a perspective from the global south

*“... a balance lies in ensuring that the means and capacity to share and actively participate in the analysis of those data are in the hands of those who generate the data and not only in those who want to analyse it.”*

THE LANCET

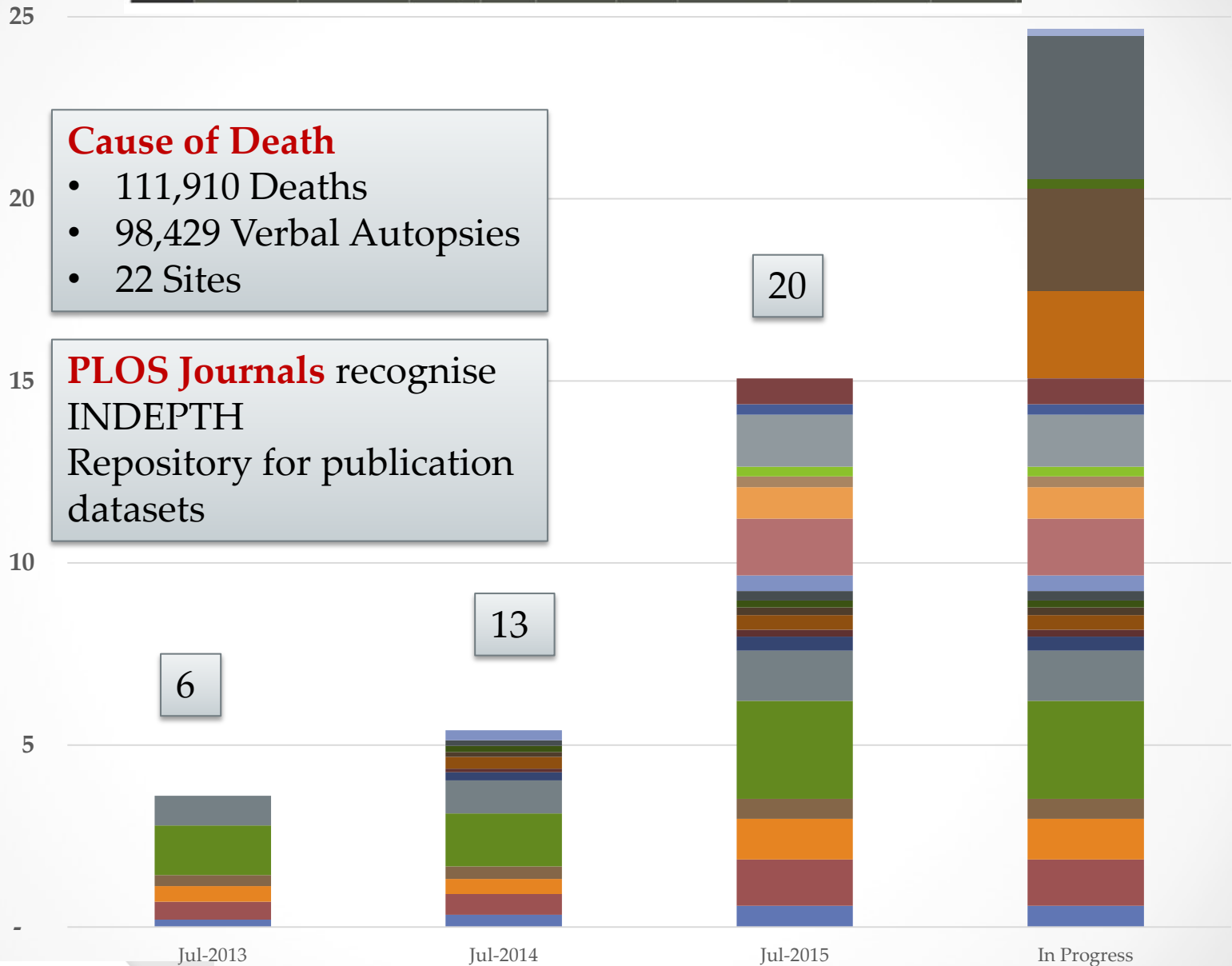
INDEPTH launches a data repository and INDEPTHStats

2013



Person Years

Millions



**Cause of Death**

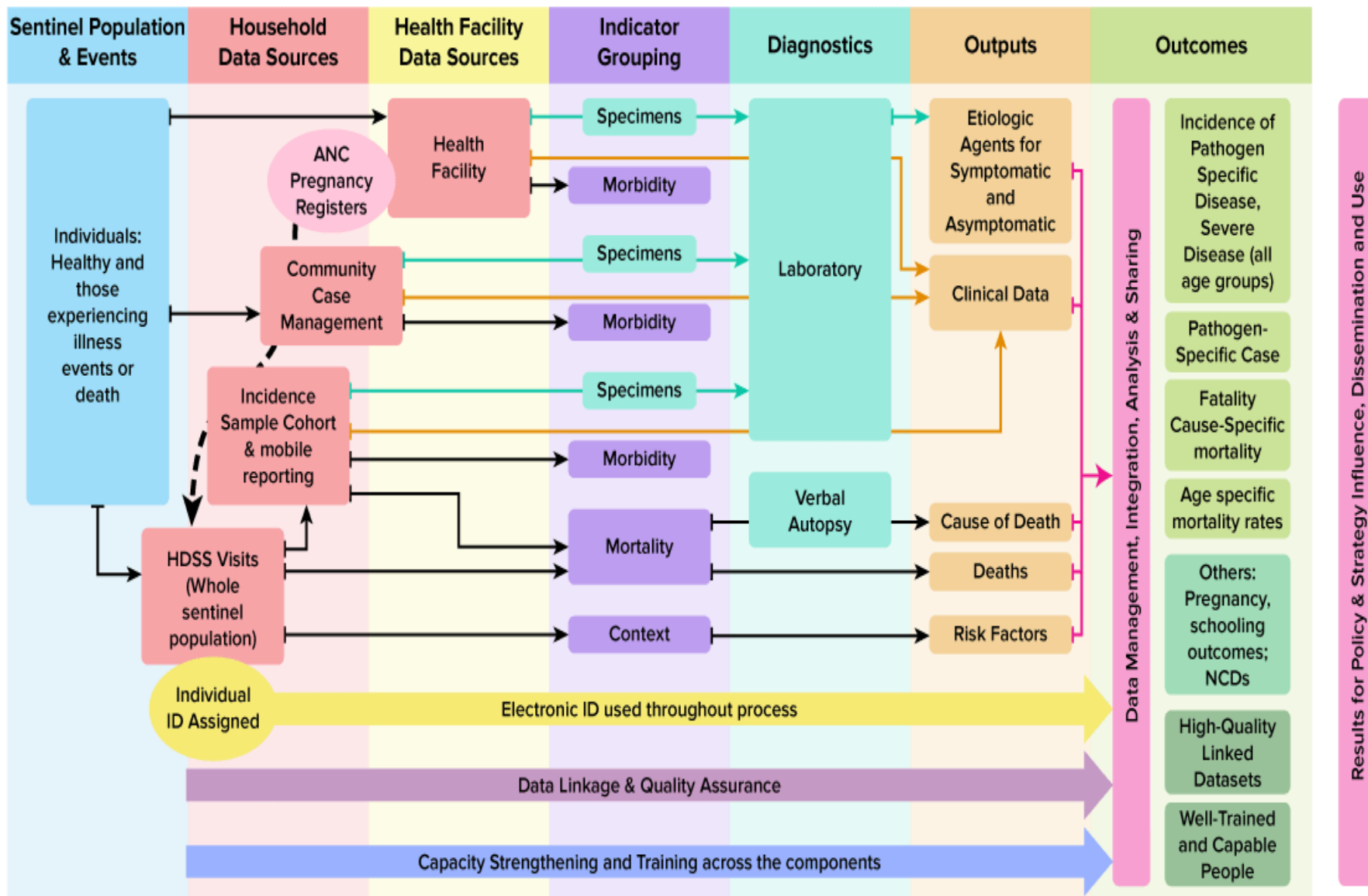
- 111,910 Deaths
- 98,429 Verbal Autopsies
- 22 Sites

**PLOS Journals** recognise INDEPTH Repository for publication datasets



# INDEPTH in the near future

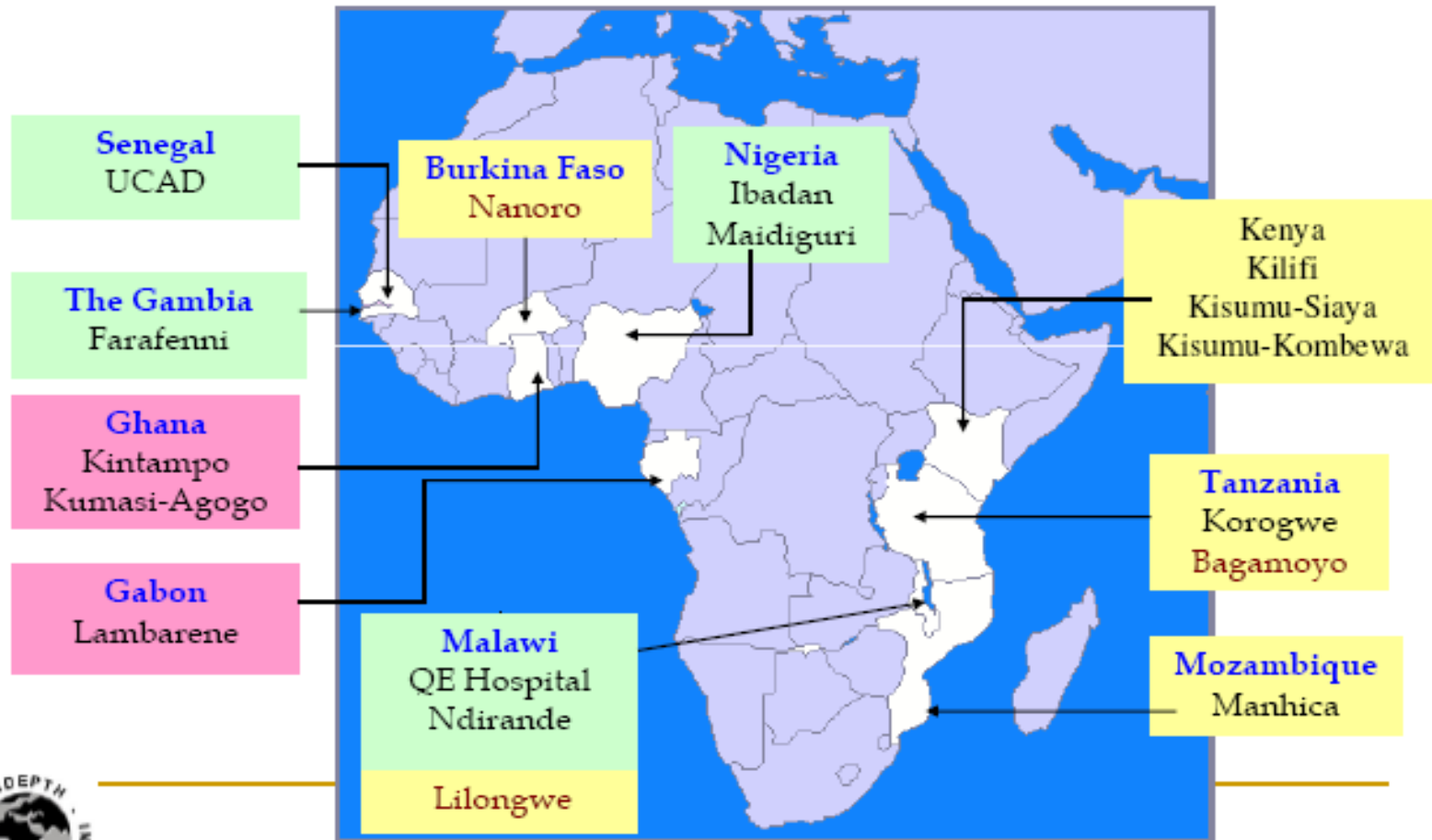
## Comprehensive Health and Epidemiological Surveillance System (CHESS)



# INDEPTH/MCTA

## HDSS SITES: DEVELOPING CAPACITY FOR MULTI-CENTRE STUDIES

### MCTA sites in 10 countries





# Existing Laboratory capacities in INDEPTH

Existing Capacities	Centres	%
Operate a clinical Lab	24	82.8%
Perform Malaria microscopy	26	89.7%
Malaria Rapid Diagnostic test	26	89.7%
Culture Bacteria and organisms	27	93.1%
Identify organisms cultured	26	89.7%
Perform antimicrobial sensitivity test	25	86.2%
Culture viruses	7	24.1%
Perform serology test on viruses	19	65.5%

INDIA



# Policy Engagement

GHANA

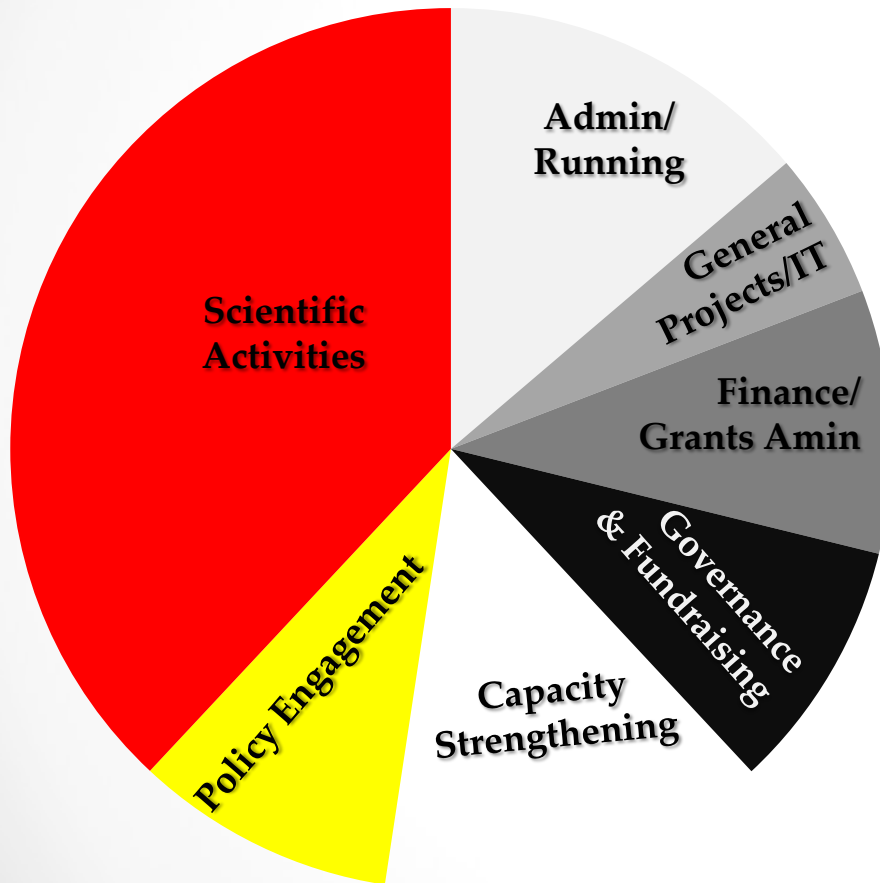


TANZANIA

- **Research to Policy Strategic Group**
- **Full-time Policy Engagement and Communications Manager recruited**
- **INDEPTH in-country policy engagement meetings (India, Ghana, Tanzania)**
- **Policy Engagement and Communications Strategy developed**

# Resources by Activity:

## Secretariat Budget 2015-2016



### Budget Highlights (\$K)

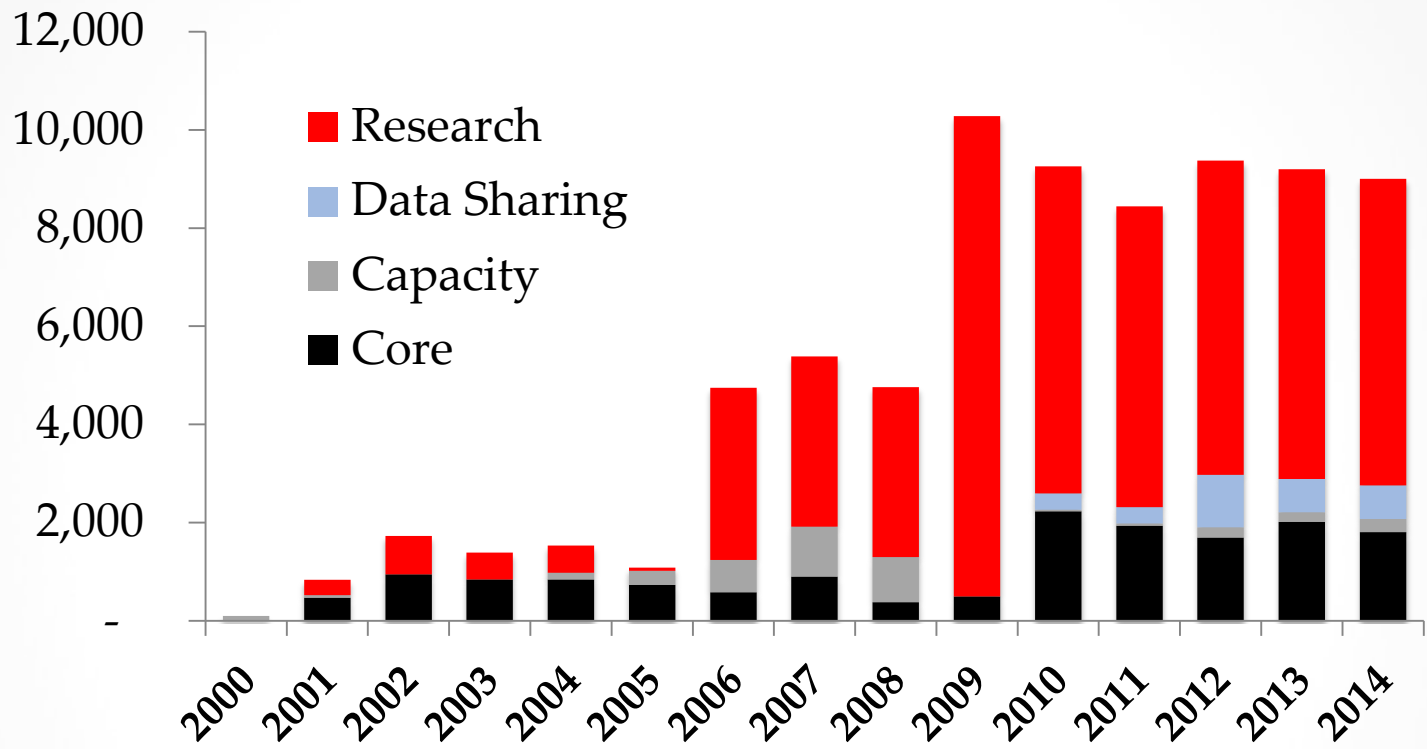
Scientific Activities:	\$1,400
Capacity Strengthening:	\$500
Policy Engagement:	\$300
Operations/AGM/Board	\$1,300
<b>Total:</b>	<b>\$3,500</b>

### Ideal:

Core - \$2,200,000 (secured until 2016)

Own efforts: \$1,300,000 (Working Groups and Consultancies)

# Core Support Catalyzes Multi-Centre Research



Investment in core activities launched in 2010-2014 at least **3x additional** investment in research, capacity, data sharing and other initiatives

# The Way Forward ...1/2

- Continue to invest in the backbone of the science of INDEPTH
  - *Deliver high quality research **evidence** to guide policy and planning processes*
- Invest in the implementation of **CHES** and position the Network to contribute to similar initiatives
- Get the entire Network to participate in iSHARE2

# The Way Forward ...2/2

- Attract new research opportunities that match global health challenges
- Play a pivotal role in strengthening civil registration and vital statistics systems (CRVSs) in our countries
- Position the Network for the assessment of progress in the Sustainable Development Goals (SDGs)
- Work towards INDEPTH's financial sustainability
  - The **INDEPTH Endowment Fund** launched

# Acknowledgements

- **Current Funders of the Network**

**Bill & Melinda Gates Foundation**

**DANIDA/SSI**

**Doris Duke Charitable Foundation**

**EU/SSI**

**GAVI**

**GSK**

**ICF International**

**NIH/NIA**

**Save the Children**

**Sida/Research Cooperation**

**USAID/PopCouncil**

**Wellcome Trust**

**William & Flora Hewlett Foundation**

**THANK  
YOU**

- Board / SAC / Centre Leaders / Working Group Leaders / Project Leaders / Collaborators / Secretariat
- All the HDSS teams, host institutions and the communities