

Walter Reed Project / KEMRI

Kombewa Health and Demographic Surveillance Systems (HDSS)

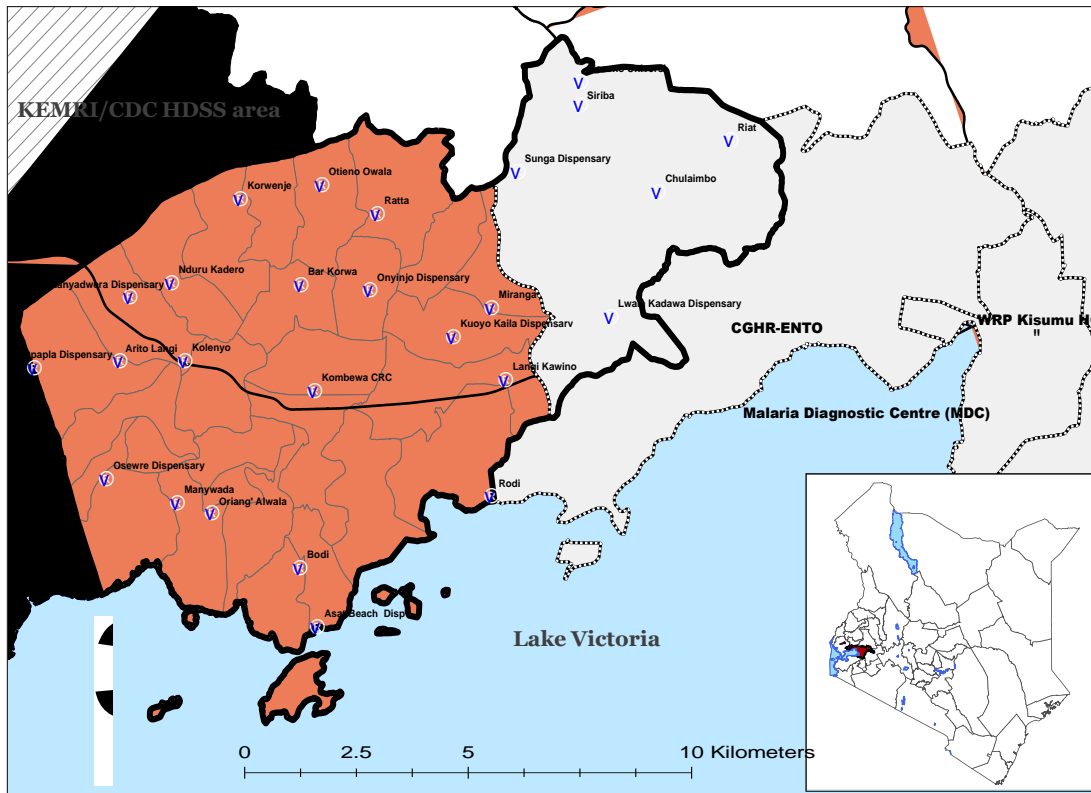
Sifuna M. Peter

Fertility analysis workshop documents (2-6th May, 2016)



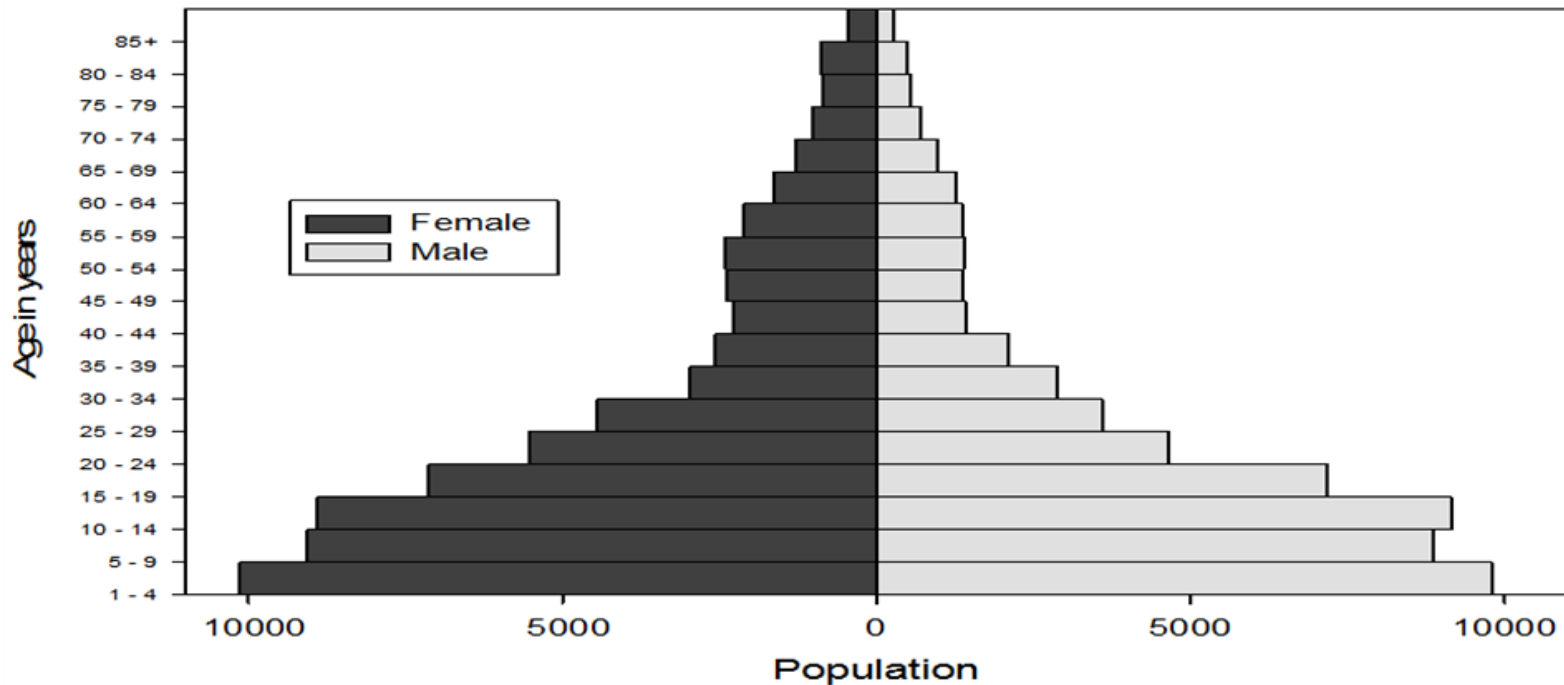
WRAIR
Walter Reed Army
Institute of Research
Soldier Health • World Health

Kombewa HDSS Location & Formation



- Start :**2011**
- Population : **137,84** (2015)
- Villages: **37** sublocations
- Density : **374/km²**
- Economical activities : **Farming and animal husbandry, petty trade, fishing**
- % 15-24 y who attend school : **72% girls ; 74% boys**
- Female-headed households: **44%**

Population structure (Baseline)



- Male:female ratio 88:100
- 15-24 years: 21%
- Crude birth rate (births per 1000 residents) 12.9
- Crude death rate (deaths per 1000 residents) 8.5
- Births per 1000 women ages 15–19 : **23.4**

DATA

	input	Variable	Availability
RESIDENCY (SEJOUR)	IndividualId	required	YES
	LocationId	required	YES
	HouseholdId	required	YES
	Compound	required	YES
	DoB	required	YES
	Sex	required	YES
	Date of Entry	required	YES
	Type of Entry	required	YES
	Date of Exit	required	YES
	Type of Exit	required	YES
	MotherID	required	YES
	Marital status at Entry (for women)	optional	YES
	Parity at Entry (for women)	optional	
	BIRTH	IndividualId	
Date of Birth			YES
Rank of Birth		optional	

MARRIAGE	IndividualId		YES
	MarriageDate	optional	
	MarriageType	optional	
	other useful information	optional	
DIVORCE	IndividualId		YES*
	DivorceDate	optional	
	DivorceType	optional	
	other useful information	optional	
WIDOW	IndividualId		YES*
	WidowDate	optional	
	WidowType	optional	
	other useful information	optional	
OTHER	IndividualId		YES
	level of education	optional	YES
	Employment status of HH	optional	YES*
	occupation of Head of HH	optional	YES
	education of Head of HH	optional	YES
	living arrangement	optional	YES*
	other useful information	optional	
Polygamy		YES	

PUBLICATIONS

- Jenkins R, Othieno C, Omollo R, Ongeru L, Sifuna P, Ongecha M, Kingora J, Othieno C, Kiima D and Ogutu B. **Tedium vitae, death wishes, suicidal ideation and attempts in Kenya-prevalence and risk factors.** BMC Public Health.2015, 15:759 DOI: 10.1186/s12889-015-2089-3
- R. Jenkins, C. Othieno, L. Ongeru, B. Ogutu, Sifuna P., J. Mboroki and R. Omollo. **Attention deficit hyperactivity disorder symptom self-report in adults in Kenya and its associated risk factors, an analysis from a household survey in a demographic surveillance site.** Global Mental Health (2015), 2, e14, page 1 of 11.
doi:10.1017/gmh.2015.14
- Jenkins, R., Othieno, C., Ongeru, L., Kiima, D., Sifuna, P., Kingora, J., Omollo, R. and Ogutu, B. (2015) **Alcohol consumption and hazardous drinking in western Kenya-a household survey in a health and demographic surveillance site.** BMC Psychiatry 15, 230.
- Rachel Jenkins, Caleb Othieno, Raymond Omollo, Linnet Ongeru, Peter Sifuna, James Kingora Mboroki, David Kiima and Bernhards Ogutu (2015) **Probable Post Traumatic Stress Disorder in Kenya and Its Associated Risk Factors: A Cross-Sectional Household Survey.** Int. J. Environ. Res. Public Health 2015, 12, 13494-13509;
doi:10.3390/ijerph121013494
- Jenkins, R., C. Othieno, L. Ongeru, P. Sifuna, M. Ongecha, J. Kingora, D. Kiima, R. Omollo, and B. Ogutu. 2015. **Common mental disorder in Nyanza province, Kenya in 2013 and its associated risk factors-an assessment of change since 2004, using a repeat household survey in a demographic surveillance site.** BMC psychiatry. 15:1

ANALYSIS INTEREST

- General trends in overall fertility and adolescent fertility levels
- Education and adolescent fertility.
- Socioeconomic inequalities and pathway to premarital motherhood.

Thank you...

WRAIR

Walter Reed Army
Institute of Research

Soldier Health • World Health

*Committed to innovation and excellence, with military-specific focus to protect the health and
readiness of the Warfighter*